

Test Case-12

Test Name: RJIL-IP-QA-DS-SYS-012

Test Objective: To check support of ICMPv4

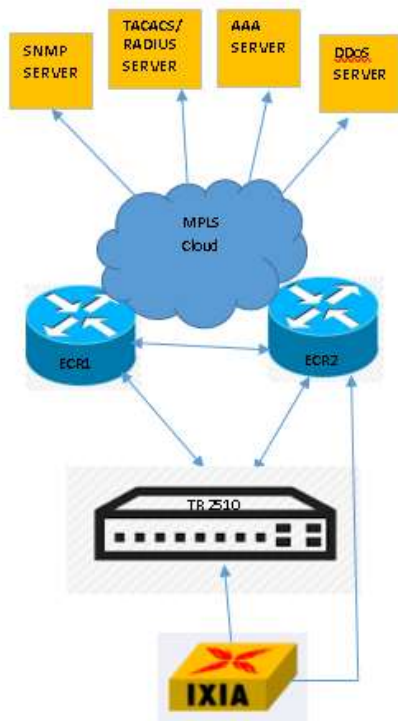
Test Configuration:

```
ip default-gateway 192.168.1.11
```

```
!
```

```
!
```

Test Set up (Including Pre requisites): Switch , ECR1,ECR2,IXIA



Procedure: Connect switch to ECR1,ECR2 and IXIA

Action:

Response:

1	ping 192.168.1.11 default gateway from switch. ECR1 and ECR2 bdi 883 ipv4 ip addres	1	Switch should be able to ping gateway and ECR1, and ECR2 by ICMPV4
Problem – Issues:			
Notes:			
Expected Result: Switch should be able to ping ECR1, and ECR2 for ICMPV4			
<p>Actual Result:</p> <p>Current configuration:</p> <pre> ! ip default-gateway 192.168.1.11 ipv6 default-gateway 2405:200:1410:1010::81 Switch#ping 192.168.1.11 PING 192.168.1.11 (192.168.1.11): 56 data bytes !!!! --- 192.168.1.11 ping statistics --- 5 packets transmitted, 5 packets received, 0% packet loss round-trip min/avg/max = 0/0/0 ms Switch# </pre>			